

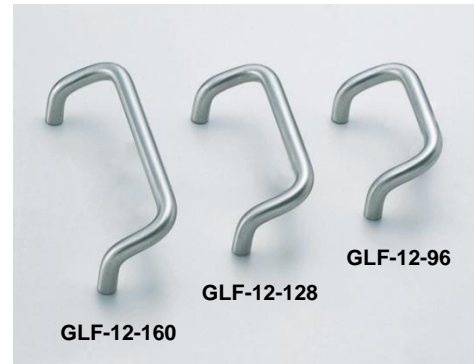
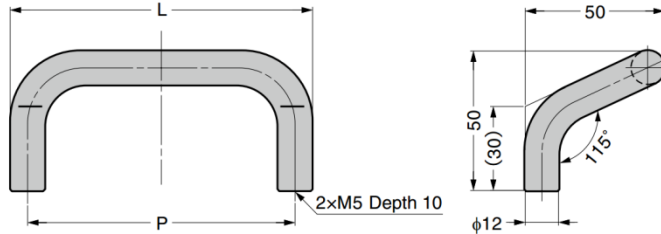
GLF-12 Stainless Steel Angled Grip Handle

Features

- Angled grip for a comfortable grip
- $\phi 12$ mm stable and strong handle
- Components (**GAS**) for installation to aluminium frame are available

Parts Included

- Truss head screw M5 x 30

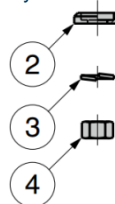
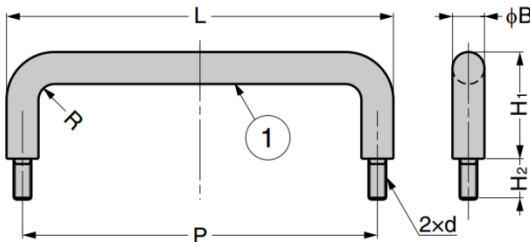


Part No.	Material	Finish	L	P	Load Capacity	
GLF-12-96	Stainless Steel 304	Satin	108	96	441 N	45 kg
GLF-12-128			140	128		
GLF-12-160			172	160		

GH-42-B Stainless Steel Handle

Notes

- Bracket **GH-42-Z** is included, and can also be ordered separately
- Other included parts: spring washers and hexagon nuts



No.	Part Name	Material	Finish
①	Handle	Stainless Steel (SUS304)	Polished
②	Bracket H-42-Z		Barrel Polished
③	Spring Washer		Plain
④	Hexagon Nut		

Part No.	L	H ₁	H ₂	B	P	R	d
GH-42-B-9	46	22	8.5	6	40	3	M4
GH-42-B-8	66		7		60		
GH-42-B-14	86		10		80		
GH-42-B-1	75	30	11	7	68	3.5	M5
GH-42-B-2	109			8	100	4.5	
GH-42-B-3	120			40	10	10	110
GH-42-B-4	130	120					
GH-42-B-15	162	50	20			12	150
GH-42-B-5	200			188			
GH-42-B-6	250			238			
GH-42-B-7	300			288			